



C75ZB(E)-F DC Drilling Motor

Joliet Electric Motors...
the quality source for
Drilling Motors.
For more than 75
years our motors have
delivered Quality,
Value and Reliability...
...Day-in—Day-out.



Joliet is an industry leader, providing traction motors for offshore drilling, land drilling, marine, and manufacturing markets. Converting old locomotive frames with rebuilt internals is a thing of the past. Joliet has developed a new factory specified frame, the **Joliet C75Z**, to an identical match of G.E.'s 752 traction motor.

Improve Your Bottom Line

The **Joliet C75Z** meets all of the G.E. performance specifications, except for the cost. Joliet continues to provide standard 1000HP and new high torque series & shunt wound traction motors. All types of variations for protection & blower options are available.

Joliet's C75Z has proven reliability throughout the drilling & marine industries and continues to meet & exceed all expectations. The **Joliet C75Z** provides competitive pricing and unsurpassed quality.

* 752® is a registered trademark of GE Transportation Systems.



P.O. Box 114
Joliet, Illinois 60434 USA

(800) 435-9350 (713) 467-7559
Fax: (713) 467-7887
www.jolietelectricmotors.com • tractionmotors.com

Features

- New factory drilling frame & mechanical components
- Class H electrical components tested to GE Specs
- New drive hub
- New pressurized connection box with terminal block
- New precision formed plated copper bolt on connection buss work
- New XP lockout switch
- New XP pressure switch
- New Space Heater, 120/240 VAC, Explosion Proof
- New brushes
- New bearings
- New 10 HP blower with 55° C Amb. XP Motor
- New bolt on chain bosses (PE)
- Red oxide primer inside & out with 2 part grey marine epoxy over all exterior surfaces
- New die cut class H field coil ground insulation
- New or remanufactured radial constant pressure brush holders
- Precision dynamic balance better than ISOG2
- New lead cable with pass thru terminals
- High torque—New 646 Armored lead cable
- ISO 9001:2000 Quality Program
- New cushioned “Export Spec.” shipping skid
- Shrink-wrap w/Desiccant
- 12/18 month warranty

Three Key Features Distinguish Joliet's C75YZ From The Competition

1 Dimensionally Interchangeable with the 752 (no variances in blower mounts, no welded feet, etc.)

2 Competitively Priced

3 Superior Quality



Joliet C75Z Drive End View



Joliet C75Z Opposite Drive End



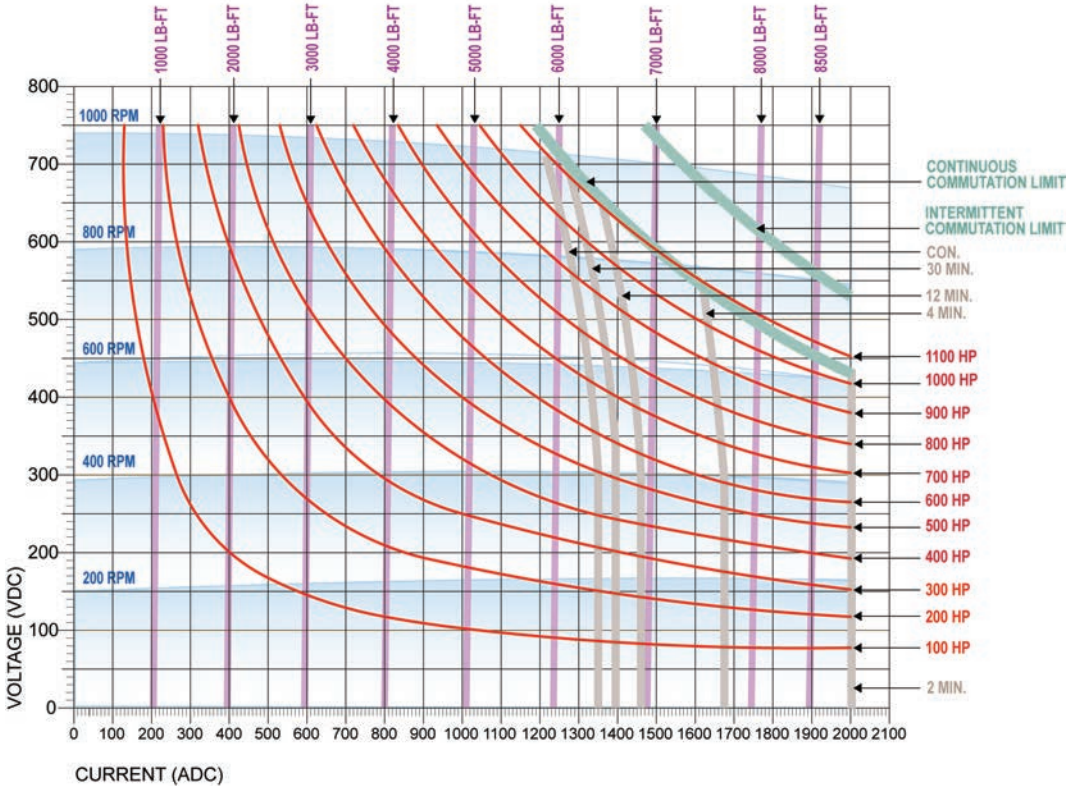
Joliet C75Z New Drilling Frame Opposite Drive End View



Joliet C75Z New Drilling Frame Drive End View

Performance / Specifications

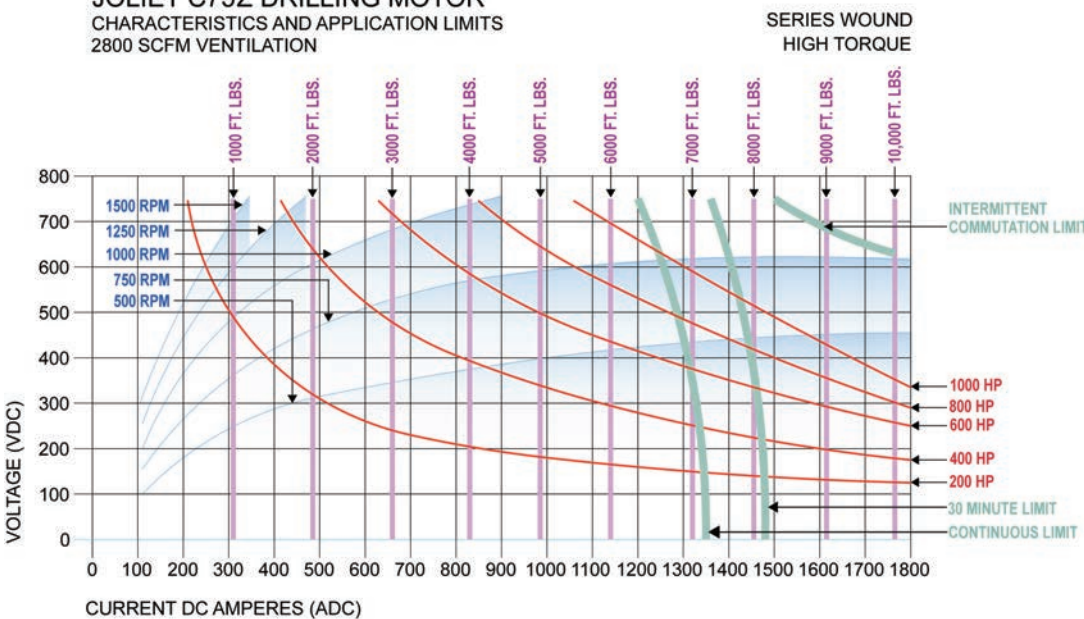
JOLIET C75Z DRILLING MOTOR
 CHARACTERISTICS AND APPLICATION LIMITS
 60 FIELD AMPS AT 2800 SCFM VENTILATION



NOTE:
 Overload: RMS current from beginning of overload not to exceed the continuous current rating given at highest voltage used. Duration of an overload should not exceed times indicated.

- Shunt Wound**
- 1130 HP continuous duty
 - 1365 HP intermittent duty
 - 750 Volts, 60 Amp., 1185 Amperes, 1040 RPM
 - Class H insulation

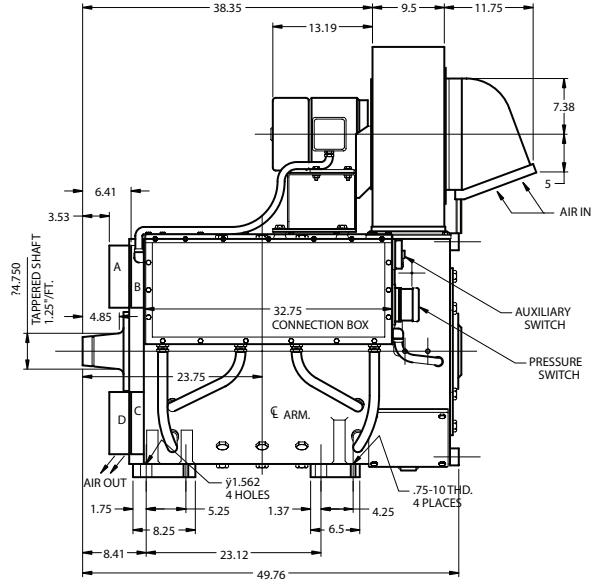
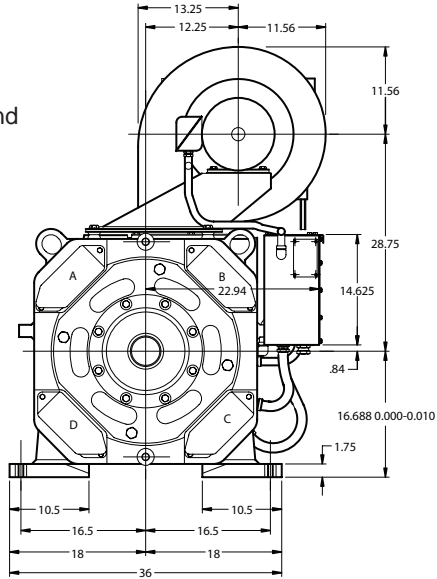
JOLIET C75Z DRILLING MOTOR
 CHARACTERISTICS AND APPLICATION LIMITS
 2800 SCFM VENTILATION



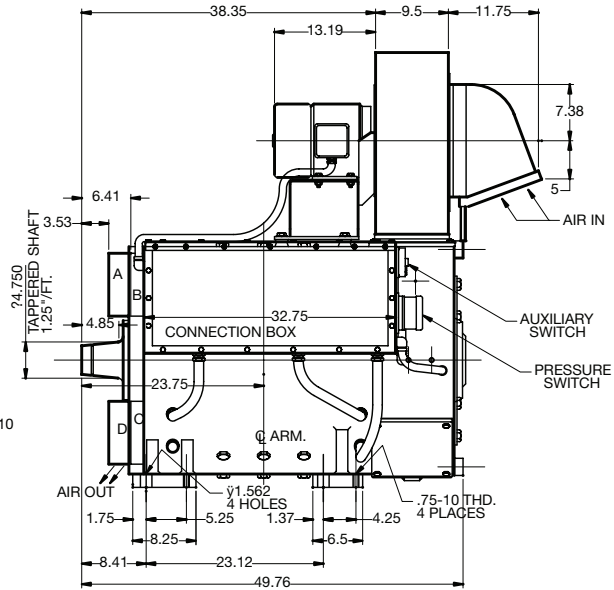
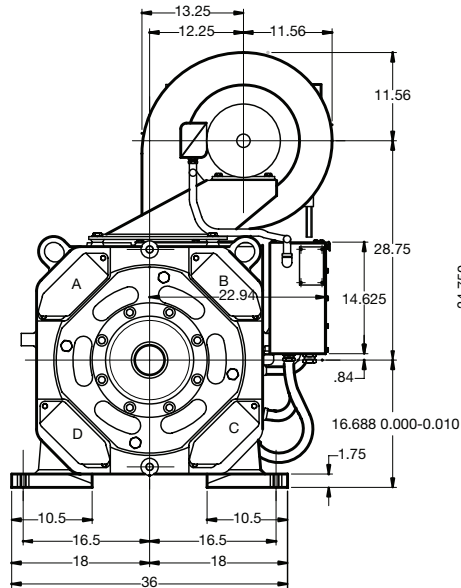
- Series Wound**
 HIGH TORQUE
- 1085 HP continuous duty
 - 1320 HP intermittent duty
 - 750 VDC, 1150 Amperes, 965 RPM
 - Class H insulation

C75ZB Series Wound

Drive End



C75ZE Shunt Wound



Not to be used for construction.

Approximate Weight: 7,225 lbs

Dimensions are in inches.